

Glastonbury Festivals Limited



Noise Management Strategy

Draft

October 2004

CAPITA SYMONDS

Glastonbury Festival Limited Draft Noise Management Strategy

CONTENTS

1.	INTRODUCTION	3
2.	BASIS OF NOISE MANAGEMENT STRATEGY	5
3.	MONITORING NOISE ON SITE	15
4.	MONITORING NOISE LEVELS FROM STAGES	15
5.	OTHER AREAS: MARKETS	20
6.	OTHER AREAS: NON MARKETS	22
7.	OTHER ON-SITE SOUND SYSTEMS	23
8.	CAR PARKS AND CAMPING AREAS	24
9.	FIREWORKS AND OTHER PYROTECHNICS	25
10.	NOISE AT WORK	27

APPENDIX 1 : GLASTONBURY FESTIVAL LICENCE 2005 NOISE CONDITIONS (TO BE PROVIDED)

APPENDIX 2 : SCHEDULE OF MARKET TRADERS WITH ALLOCATED SOUND SYSTEMS (TO BE PROVIDED)

APPENDIX 3 : NOISE CONTROL FLOW CHART

APPENDIX 4 : SOUND SYSTEM SCHEDULE (TO BE PROVIDED)

APPENDIX 5 : SCHEDULE OF ONGOING REQUIREMENTS

APPENDIX 6 : RISK ASSESSMENT

FIGURE : LOCATION OF MARKET SOUND SYSTEMS OVER 500 W (TO BE PROVIDED)

SYMONDS GROUP LIMITED		
JOB NO: 4E 60055/2005		
	INITIALS:	DATE:
ORIGINATED:	DCL	Oct 2004
CHECKED:	JETG	Oct 2004
PASSED:	DCL	Oct 2004
DOC REF:	4E/60055/2005/ report1.doc	

Capita Symonds Limited

Registered no 2018542
Registered office 71 Victoria Street LONDON SW1H 0HA
UK offices at London, Birmingham, Bristol,
Cardiff, Colwyn Bay, East Grinstead, Leeds,
Manchester.
Offices throughout Asia and the Middle East
And project offices across the world

1.1 Capita Symonds House, Wood
East Grinstead, West Sussex RH19 1UU
Tel: +44 (0)1342 327161
Fax: +44 (0)1342 315927
website: <http://www.capitasymonds.co.uk> 2

1. INTRODUCTION

1.1 Capita Symonds Ltd. (CS) (Formerly The Symonds Group) was appointed by Glastonbury Festivals Ltd. (GFL) between 2002 and 2004 to undertake the sound control for the events to be held over this period at Worthy Farm, Pilton, Somerset.

1.2 One of the conditions relating to noise that were included in the Public Entertainment Licence (PEL) that was issued by Mendip District Council (MDC) states that;

' A noise management strategy shall be provided to the Licensing Authority on or before 23rd April 2004. The Noise Management Strategy shall identify how noise arising from the holding of the event will be effectively controlled so as to prevent cause for community annoyance.'

1.3 This draft document contains details of the management strategies that will be implemented by the consultant on behalf of GFL to ensure that the sections of the licence relating to noise issues are addressed.

1.4 It is recognised that MDC, who have undertaken the noise monitoring and control at the festivals prior to 2002, have unparalleled experience regarding noise issues associated with the festival, and as such, we once again envisage working closely with the officers of MDC to ensure that noise from the event does not cause any off-site noise problems.

1.5 We understand that there were only 28 complaints of noise from amplified music or fireworks received from 14 households for the 2004 festival between Wednesday 23rd June and Monday 28th June 2004. This was an increase in the number of complaints received in 2003 and this current iteration of the strategy seeks to reduce this number, and build on the good working relationship established between the noise consultants for the festival and MDC.

1.6 CS has a copy of the licence conditions for the 2004 festival which will be used as the basis for this document. The full document will contain the licence conditions for 2005.

1.7 Information will be obtained from Glastonbury Festival Ltd. regarding the Market Areas, and this will be forwarded as an addendum to this report when it is available. CS will also seek and provide full details of the sound systems to be brought onto site to provide licensed entertainment. Further details will be forwarded to MDC when they are available.

1.8 This draft noise management strategy contains information on the response that the acoustic consultant would provide to cover noise from the following sources;

- Stages
- Market Areas
- Cafés and ambient areas
- Campsites
- Fireworks
- Noise at Work

1.9 The information contained in this report relates to staffing levels, control methodologies and procedures for each of these areas. These have been based upon the information currently available.

1.10 There have been some major changes to the 2004 Noise Control Strategy to address off site noise issues. These include;

- Changes to the management structure and administration of the noise management.
- Re-designation of Radio One and The Glade as stages
- Internal restrictions attached to the provision of music in bars in the market areas
- Further controls for back stage and 'green room' noise sources.
- Enlargement of on site and off site monitoring team at night
- Changes to remote monitoring instruments

2. BASIS OF NOISE MANAGEMENT STRATEGY

Introduction

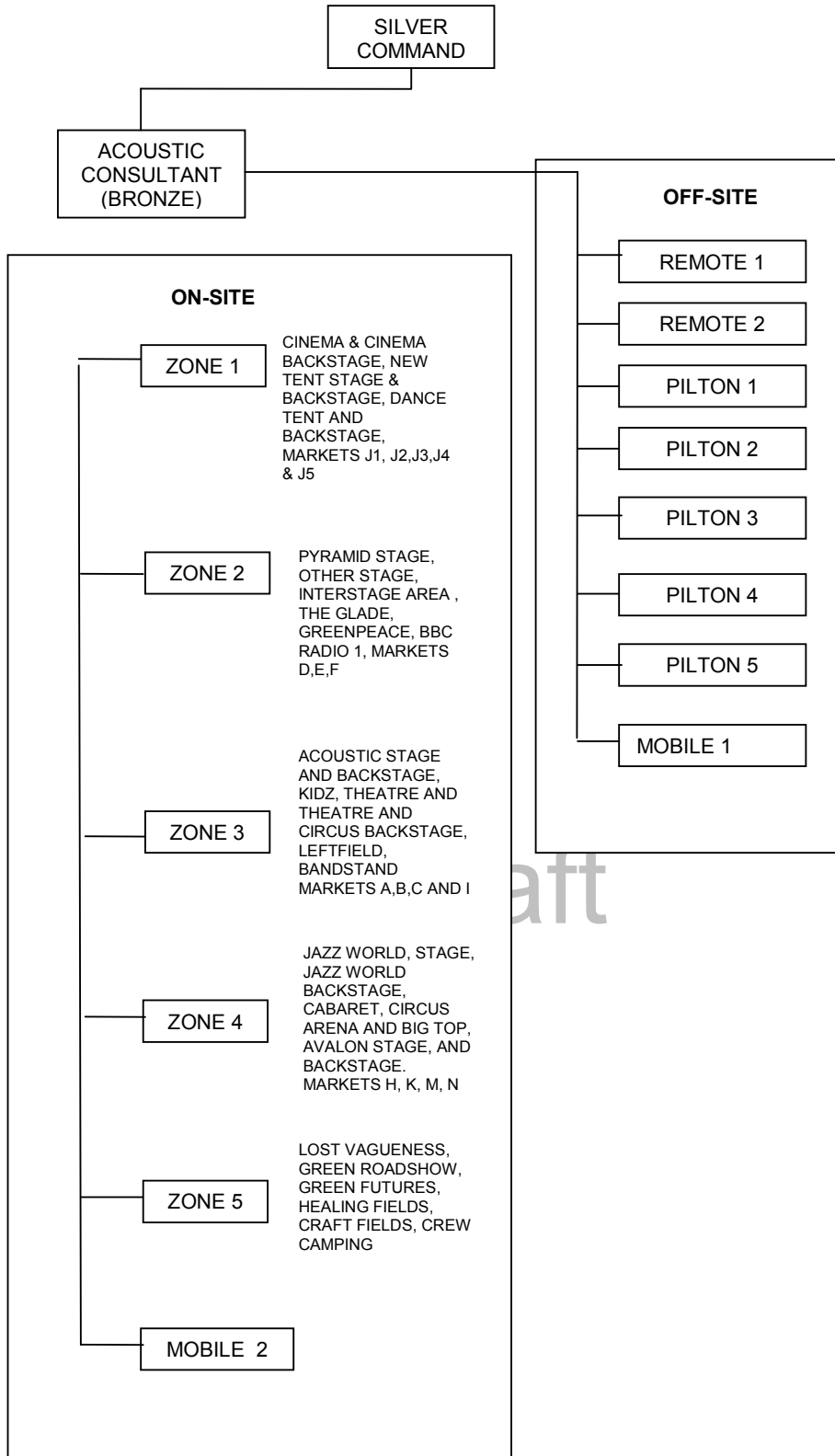
2.1 The acoustics consultant appointed for the festival, shall work to GFL silver command towards the management of noise issues arising from the licensed site area on behalf of the licensee with the exception of unlicensed musical events, which are considered to be a security issue and subject to a strict enforcement policy that is not covered in depth by this strategy. A flow chart showing how information relating to these issues will be reported when they occur within the perimeter of the licensed site is included later in this document. In the respect of all the noise sources identified in this document, the licensee has given the authority necessary to carry out these controls to the acoustic consultant. All area co-ordinators, stage managers, sound system contractors, market managers and any other persons who are in control of areas of the site covered by the license shall be made aware that the noise consultant is undertaking this function on behalf of, and with the full authority of, Glastonbury Festival Ltd.

2.2 In all the matters of sound control that this strategy refers to, the acoustics consultant reports directly to the licensee via GFL silver.

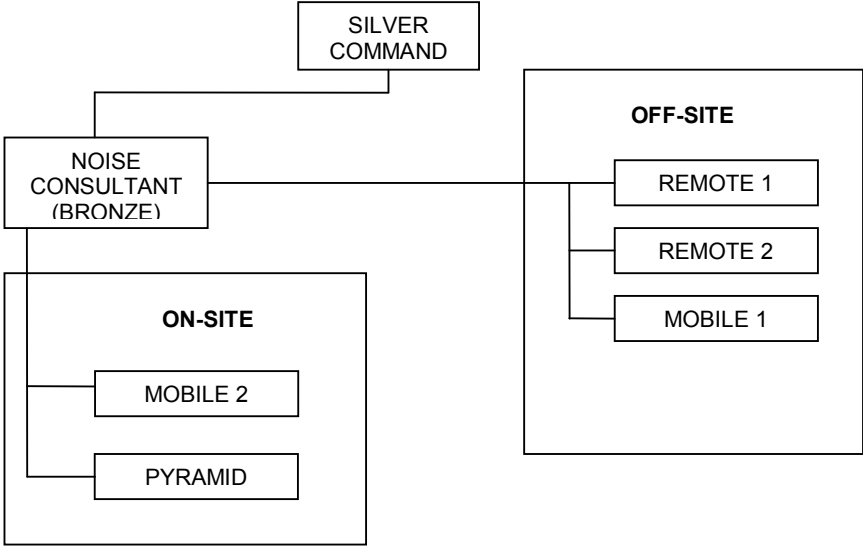
Structure

2.3 A complete overhaul of the noise management structure has taken place. A portacabin office is to be set up adjacent to the MDC portacabin offices with a GFL Bronze Noise Manager in place with administrative back up and off site and on site noise monitors reporting into bronze. The flow chart for day depicts – cabin staffed with administrator and Bronze to be mobile. The flow chart for night demonstrates cabin staffed with noise bronze 2200 – 0600 hours and mobile bronze support until 0300 hours.

NIGHT TIME NOISE MANAGEMENT FLOW CHART 00.30 – 06.00



STAGE TIME NOISE MANAGEMENT FLOW CHART 10.00 – 00.30/00.00



Personnel

- 2.4 The acoustics team will be advanced by David Leversedge (DL), Principal Consultant. David trained as an EHO and has over twenty years’ experience of noise control. He has led noise control teams at music events for Symonds since 1995 including the Phoenix Festival Long Marston 1997 and the Carling Weekend Leeds 1999 –2004, as well as events in Finsbury Park, Wembley Stadium and the Welsh National Stadium and well as the Glastonbury Festivals between 2002 and 2004. David also has extensive experience of all night music events. David Leversedge will operate as the mobile bronze, between 1500 hours and 0300 hours.

- 2.5 The acoustic consultant (Bronze) based at the portacabin adjacent to the Mendip District Council Cabin will be headed up by either Jim Griffiths or John Staunton, or a combination of both.

John Staunton

2.6 John was appointed the Technical Director of Acoustics for Capita Symonds in 2000, and has an extensive range of experience in acoustics, noise and vibration having worked in these fields for 20 years. He has acted as expert witness and presented evidence at a number of legal proceedings including licence hearings, magistrates courts, high courts, public inquiries and Government Select Committees. John's experience covers the full scope of acoustics and noise issues and has been a specialist advisor to the Noise Council. John has managed entertainment/concert noise control projects since 1985 and is project manager for many other concerts including team leader at the V concerts since their inception, the Hyde Park Route of Kings and concerts at Earls Court, Wembley Stadium, Old Trafford and Main Road amongst other venues.

Jim Griffiths

2.7 Jim was appointed as Director of Acoustics for Capita Symonds in 1992. He is a Fellow of the Institute of Acoustics and Chairman of the London Branch of the Institute. He has a wide range of experience in all technical aspects related to acoustics, noise and vibration and has project managed numerous innovative projects as well as presenting evidence at legal proceedings, public inquiries and House of Commons Select Committees. Jim has also specialised in the field of entertainment noise control and transport noise assessments over the past 20 years and has built up an international reputation in this market, being the author of many technical papers presented in the UK and overseas.

Draft

Jim has been responsible for managing major entertainment projects involving concerts in the UK, Europe, USA and Far East since 1985. Examples include: Wembley Stadium, Knebworth, Earls Court, Olympia, Castle Donnington, Edinburgh Castle, Manchester United Football Ground, Munich Stadium, Bayle Stadium, Stadium Galgenwaard (Utrecht), an arena in Orlando, Florida and Hong Kong Stadium. Advice has included presenting evidence at Licence Hearings, Magistrates Courts and in the High Courts recommending noise control procedures and active control during events.

2.8 There will be a team of consultants (including two at bronze level) on site throughout the three days of the event and for the sound propagation tests on the Thursday before the music on the stages starts. There will also be a bronze level consultant on site from approximately midday on Tuesday 21st June until the start of the sound propagation tests and from the close of the festival over the night time periods on Monday 27th and Tuesday 28th June.

2.9 This means that there will be separate night time and daytime teams covering a longer working day than for previous years, plus an overlap extending until 03:00, between Thursday until Wednesday mornings.

Off Site Team

2.10 There will be a shift in emphasis in the manner of acoustic control in 2005 that differs from previous years. A study of the pattern of complaints from previous years shows that most complaints arise from night time incidents. To reduce incidents of potentially annoying night time noise, measures have been put into place to address the most commonly recognised on-site noise sources. Pilton has been designated into 5 zones, each with a proactive noise monitor working 2200 hrs – 0600 hr, Friday, Saturday and Sunday with one further mobile personnel for other areas (see enclosed map)

Bronze Controller

2.11 At the point when the stages have stopped operating (00:30 Saturday and Sunday morning and 00:00 Monday), the off site team will be in place to assess that the licence condition is being complied with. This will be co-ordinated with the on site team through the bronze controller. The bronze controller will be supported by an administration team operating on a continuous basis from 22:00 Thursday 23rd June until 06:00 Monday 27th June.

On Site Team

2.12 The overnight on site team will be allocated specific zones to patrol and manage. These are as shown in the flow chart above. The zones cover the whole noise generating areas of the festival, site excluding the camping areas with an emphasis on those areas from which noise arose that gave rise to complaints in previous years. There will be consultants on duty in these areas overnight Thursday, Friday, Saturday and Sunday.

2.13 Night-time control of the market areas would be undertaken in conjunction the market managers. Area co-ordinators will also be fully involved in this process and will be expected to offer their full

assistance to reduce off site sound levels by on site control. MDC staff will also be on duty monitoring compliance with the licence conditions.

- 2.14 The target will be to assess any complaint of noise from Pilton within 10 minutes of it being received by the acoustic team and within 20 minutes of any complaint received from outside Pilton. All consultants will be qualified
- 2.15 The names of the team members and their contact details will be made available to MDC when the personnel attending on site have been finalised. This is an item for inclusion in the schedule of ongoing requirements (Appendix 5). A chart showing staffing levels, their designations and their operational areas is also to be provided as an Appendix.
- 2.16 The acoustic consultant team would be on site for the period that has been assessed, from the experience of previous years, to present the greatest risk of a noise incident arising. Outside these periods cover for noise related issues would be provided by The Production Office.

Liaison with MDC

- 2.17 Whilst the acoustic consultant will be responsible for ensuring that the noise conditions that form part of the PEL are complied with at all times on behalf of the Licensee, MDC as the licensing authority also retain the responsibility for checking that compliance with these conditions has been achieved to determine if there is a need for any enforcement action. This has the advantage of providing a defining line between the roles of the consultant and MDC. Whereas the consultant would have the delegated authority from the Licensee to effect all noise control on site, any action taken would be informed by information provided to us by either the acoustic consultants or officers of MDC in the field relaying information as to whether or not the off- site noise levels, as defined in licence, are being complied with.
- 2.18 It is envisaged that as at this year's festival, a close working relationship between the acoustic consultant and MDC will ensure that sufficient cover is provided at all times, and that there is minimal duplication of activities without compromising either control strategies or our defined roles.

Daily Liaison Meetings

- 2.19 In order to co-ordinate our activities with MDC we propose that, as for previous years, an on site meeting be arranged at approximately 11.00 each day to discuss noise related issues. These meetings will generally be attended by DL and a representative of MDC, although in the event that more specialist knowledge is required, other persons such as sound system operators, market managers, stage managers or the licensee could be invited to attend.
- 2.20 The purpose of the meeting is to review the conduct of the noise control for the day before and highlight any potential problems for the coming day.
- 2.21 The noise consultant will make himself available for each of these meetings, which can only be cancelled by MDC
- 2.22 From previous experience, although the night time periods on Monday 27th June and Tuesday 28th June are not high risk periods for noise incidents, there remains possibility of unauthorised staff parties etc. at night. As such a bronze level consultant will be on site to cover these periods.
- 2.23 The consultants who will be working at the festival this year and their contact details can be found in the table below. **Note these telephone numbers are not to be given out beyond the circulation of this document without the express permission of the consultant**

Name	Mobile Telephone

2.24 Details of the management and control strategy for the site can be found in Sections 3 to 6 of this report.

Licence Conditions

2.25 The licence conditions for noise for the 2005 festival will be reproduced in Appendix 1 to this document. Noise conditions are found in two sections;

- C - Health and Safety
- H - Environmental Noise and Sound Management

These will be reproduced in Appendix 1 of this Strategy

2.26 It is primarily the matters contained in the licence conditions that determine how noise from the licensed festival site are controlled. At this point it is worth emphasising that the consultant's role at the festival is solely to provide noise control for noise that emanates from the licensed site, and not from any other sources. As will be detailed in a later section the consultant would provide an off-site noise monitoring service in conjunction with MDC to check off site noise levels, including those arising from the festival campsites.

2.27 The licence conditions specify;

- (i) Hours to which the PEL applies
- (ii) Noise levels not to be exceeded at off site locations and the specified locations
- (iii) Testing of sound systems
- (iv) Restrictions applying to amplification equipment being brought on to site
- (v) Audience and staff exposure levels

2.28 In 2002 Symonds received clarification of the phrase 'audible and discernible' in proposed conditions. This was defined by MDC and agreed by Symonds as being

'Noise which is distinct above the general hubbub of activity on the site, such as vocals (recorded or live) or instrumental music (recorded or live), or in combination can be identified by the human ear as being likely to originate from discrete sources from the licensed site'

Sound Level Meters

- 2.29 All sound level meters used on the site will conform to the Type 1 specification contained in BS EN 60651. All meters will have been subjected to a full manufacturer's calibration within 2 years of the use on the site.
- 2.30 It is acknowledged by GFL and MDC that all the information that is pertinent to the successful sound control of the event is not yet available for inclusion in this document. In recognition of this, it has been agreed that a schedule of ongoing requirements, relating specifically to these data is prepared and collated and submitted to MDC by GFL.
- 2.31 The items that are to be included in this schedule can be found in Appendix 5 to this document.

Risk Assessment

- 2.32 As for 2003 and 2004, a risk assessment for noise has been produced. The assessment for last year with some updates based on the experience from 2004 is included as Appendix 6. The rationale behind the assessment is to determine the potential for an off site noise incident to occur, and then to look at ways in which the risk of this happening can be reduced to a residual minimum. This is based on assessing the magnitude of any possible noise incident and the likelihood of its occurrence. A maximum score of 3 is used for each of these criteria, and the overall risk is the product of these two values.
- 2.33 For example the Pyramid Stage is the location of the largest on site sound system. It also faces towards Pilton where there is, for the area, a sizeable population. The magnitude is scored as 3 as were there to be an incident, a large number of people could be affected, and the potential is scored as 2 as, based on previous experience, the prevailing wind direction is from the stage to Pilton for much of the day. This gives a score of

$$3 \times 2 = 6$$

- 2.34 The risk can be reduced by focussing the system and providing frequent checks. The risk does not disappear, but it is reduced. In the light of experience from the 2004 festival where the sound system was more focussed, our off site measurements confirmed that the residual risk was indeed reduced and the assessment for 2004 has been amended as follows;

$$2 \times 1 = 2$$

2.35 Another factor that can affect the rating is the hours of operation, as the potential for an off site noise incident to occur is more likely in the early hours of the morning when resident may be more disturbed.

2.36 The content on each stage has also been considered as part of the risk assessment.

Draft

3. MONITORING NOISE ON SITE

3.1 The monitoring of noise on site will be split into two time periods 1000 hours – 2200 hours and 2200 hrs to 0600.

3.2 The 1000 hours – 2200 hours operation will be as per daytime flow chart with a permanent base at the Pyramid Stage with two mobile monitors looking at The Stages, Market Areas, and other ambient sources.

3.3 The 2200 to 0600 operation will operate in the same manner, albeit with greater numbers of personnel and in a zoned manner in order to improve speed of response to any offsite issues being reported in

4. MONITORING NOISE LEVELS FROM STAGES

4.1 Most of sound energy on the site will be generated by the sound systems associated with the stages. The hours between which these stages are permitted by the licence to operate are Friday and Saturday 10.00 until 00.30 and Sunday 10.00 until 00.00. The stages at this years' festival have been divided into two distinct categories as used in the MDC document 'Noise Team Training/Information Pack'. The distinction relates to the level of control that MDC deem appropriate for the two categories of stages. The 'Larger Stages' will be as follows;

- (i) Main (Pyramid) Stage
- (ii) The Other Stage
- (iii) Dance Stages
- (iv) New Tent

Draft

4.2 The functions that would be carried out at these stages are as follows;

Mixer Position

- (i) Check sound level at mixer position ($L_{Aeq,1 \text{ minute}}$)
- (ii) The consultant would provide the SLM, and carry out all calibration checks, orientation etc.
- (iii) Liaise with off-site consultants or MDC staff, and where necessary arrange for sound output from the stage to be reduced

- (iv) Identify forthcoming potentially loud bands
- (v) Measurement of $L_{Aeq,1minute}$ at appropriate points next to crowd barrier, next to security nearest to a speaker, in the first aid tent, at entrance to the ear protection zone.
- (vi) Measurement of Peak Action Level at noisiest area (e.g. pit area) where staff/audience stand as required
- (vii) Provide advice to stage managers regarding Noise at Work issues and take noise measurements as required

4.3 If sound levels are thought likely to exceed $L_{Aeq,T}$ 85dB on a daily exposure basis, hearing protection zones would be established at these stages. The acoustic consultant will liaise with MDC to determine if from past experience of any of these stages this is already known to be required.

Lesser Stages

4.4 Other stages on the site, termed 'lesser stages' in the MDC document are to be visited at least once each day during the festival. These stages are as follows;

- (i) Acoustic
- (ii) Jazz World
- (iii) Avalon
- (iv) Radio One
- (v) The Glade Stage

Draft

(IV) and (v) were not designated as Stages in 2004. They were highlighted as being post 0030 hrs off site noise sources in 2004 and hence in 2005 will conform to stage hours, that is closing at 00:30.

Other Areas

4.5 The other areas are spaces that provide entertainment but operate outside the entertainment hours for the larger stages and the lesser stages. These are follows;

- (i) Cinema
- (ii) Cabaret
- (iii) Circus
- (iv) Theatre
- (v) Avalon Café
- (vi) Glade Café
- (vii) Lost Vagueness

4.6 As these areas be operating during part or all of the night time period, they are subject to the stringent control measures proposed in this strategy for the night time period,

Target sound levels

4.7 At all stages, a target sound level of $L_{Aeq,15 \text{ minutes}}$ 98 dB at the front of house will be adopted. This is not the maximum level at which the stages would operate should the weather conditions and other factors permit. The sound level at which a stage operates will remain the judgement of the acoustic consultant and will be determined by off the site sound levels at the time to ensure that the licence condition H3 (see Appendix 1) is not exceeded at any of the specified locations. This level applies to the stages only and not to any other sound sources within the festival.

4.8 The cinema will be operating in the night-time period. The orientation of the cinema has changed in 2004, and the screen and the sound system faced away from Pilton. There is also a small cinema tent which will operate during the hours shown in the sound system schedule. This was found to be satisfactory in 2004 with no complaints of off site noise attributable to the cinema.

Off Site Monitoring Instruments

4.9 During the period covered by the stage times, the consultant's staff will be operating both on site and off site, with one consultant checking noise levels at the off-site monitoring locations. In previous years, 4 off-site locations have been monitored continuously by MDC, with 5 additional monitoring points where spot monitoring has taken place. One of the council's monitoring points used in previous years, Ostler's Cottage, Hedge Lane has been replaced by 871 Hedge Lane. Symonds

intend to adopt this off-site monitoring scheme. Last year Symonds provided an additional two off site monitoring positions at;

- The Old Rectory , Pylle
- The Old Vicarage, Pilton

For 2005, the proposal is to install sound level meters that can be downloaded remotely, that is from the control centre and that the consultant provides the meter at Benleigh House rather than The Old Vicarage which would be provided by MDC. This is considered to have the following advantages;

- Instant access to noise level can be available on the festival site at all times
- Real time audio can be dialled up from the control position to confirm the nature of the noise source

These sound level monitors will be on site and operating from 15.00 on Wednesday 23rd June. 15 minute measurements of L_{Aeq} , L_{A1} , L_{A10} , L_{A50} , L_{A90} , L_{A99} and L_{Amax} will be made for the entire licensed period of the festival.

- 4.10 The results from these positions will be provided to MDC in the form of Excel files after the festival has concluded.
- 4.11 It is envisaged that, as discussed with MDC, off site monitoring would be carried out both separately and jointly by the consultant and officers of MDC. Representatives from each organisation will be available to carry out the off-site noise monitoring in the night time period. In addition, security have been informed of the requirement from MDC that 2 security personnel are to accompany night-time off-site monitoring, and this has been allowed for in the resource allocation.

Sound Propagation Tests

- 4.12 Noise levels at each front of house mixer position are to be measured as 1 minute L_{Aeqs} . Noise levels off site are to be taken in 1/3 octave bands to allow adjustment of individual frequency bands, should this be required..
- 4.13 Before the event commences, a sound propagation test involving all the main stages would be carried out between 16.00 and 20.00 on the Thursday before the festival. It is proposed that music be played through the sound systems at performance levels and the off site noise levels measured at locations agreed with the local authority. The front of house mixer desk sound levels that are

compatible with maintaining compliance with the licence conditions will be noted and conveyed to MDC after the tests have taken place. It is acknowledged that due to changes in weather conditions, these front of house levels may change throughout the festival.

- 4.14 At the previous festivals, off site noise that could have been 'audible and discernable' arose in connection with music provided as part of pre and post festival parties on the Wednesday and Thursday before and the Monday after the three days of licensed entertainment. In preparation for this festival, stage managers will be asked to provide details of the use of sound systems outside the permitted hours of amplified musical entertainment for staff parties etc. The consultant would liaise with each of these stage managers to minimise disturbance from these parties.
- 4.15 A flow chart illustrating the control mechanisms for the control of noise from stages and market areas is included as Appendix 3.

Draft

5. OTHER AREAS: MARKETS

5.1 As for 2004, there are likely to be more than 700 market traders operating in the market areas, and over 100 of these would be bringing sound system equipment onto the site to use in conjunction with their trading. Unlike the stages, the market areas operate outside the hours specified to the stages. They are however subject to controls, particularly during the sensitive night time period.

5.2 The market traders are under the control of GFL. Traders are allocated an appropriate size of sound system for their particular concession.

5.3 Before coming onto the site, the operators of the stalls will need to provide the following information to GFL;

(i) Name of concession operator

(ii) Name of person in control of sound system (if different from (i))

(iii) Proposed times of operation

(iv) Power rating of sound system.

5.4 Before arriving on site, the concession operator will be issued with a list of 'Terms and Conditions for trading at Glastonbury 2005'. One section of this schedule entitled 'Approved sound systems in stalls' will read as follows;

'Approved sound systems in stalls must adhere to environmental health or licence sound level conditions. Traders must respond to any request to modify sound levels from Site Management, the Festival Acoustics Consultant or Security, or Environmental Health Officers. To achieve this there must always be somebody available at the stall to make the required adjustments to the sound levels. Should a trader fail to respond to any such request in a reasonable time, they will be required to leave the site. Should a trader bring on site a sound system that has not been included in their application and approved in writing prior to the festival, it will be confiscated.'

5.5 Prior to the festival dates, the consultant will liaise with the market managers to ensure that the siting arrangements for the market stalls are commensurate with minimising any off-site noise impact.

5.6 The Market Team will check the sound systems brought onto site against three broad categories,

- (i) High output (1000 watts and above)
- (ii) Medium output (200 to 500 watts)
- (iii) Low output (less than 200 watts)

Where there is any doubt as to which category applies to a sound system, the market team will make a note of the traders details and refer them to the Market Managers for confirmation. These sound systems will then be checked by the Market Managers (and the consultant if necessary) to determine if the system complies with what has been agreed already with the trader. If the sound system does not comply, it would be confiscated.

- 5.7 An audio specification detailing PA size and diagrammatic arrangement of speaker arrays will be required for cafes, marquees, traders etc with proposed PA size greater than 2KW.
- 5.8 GFL will supply the consultant with a schedule of traders and the size of the sound systems allocated to them. This will be included as Appendix 2. In previous years MDC advised Symonds that the total sound output from the market areas, measured as the total kW, should not exceed 30 kW.
- 5.9 The sound system installations for all traders with power output ratings of more than 1000 Watts will be checked jointly on or before the Thursday before the licensed entertainment starts, by the Market manager and one of our consultants. A record of the installed sound system and the other information requested as detailed in paragraph 4.3 above checked against the information returned by the stall operator to the Market Management before the festival. Any deviation from the information provided will be noted and if necessary sound systems re-orientated or confiscated.
- 5.10 Sound levels from the market areas would be checked on a nightly basis by the Market Managers and the on site noise team. As in the past, this would be by walking around the market areas during the times of stage entertainment and when the stage entertainment has finished for the night. This is to identify any stalls that may be operating in a manner that has not been previously agreed with the Market Managers and the consultant.
- 5.11 Off site noise levels will be checked during the night-time period on a permanent basis to determine if there are any noise problems being caused by the traders. If any such problems are identified, appropriate action, that is either effecting a reduction in sound levels at one or more stalls or switching off sound systems completely will be undertaken. If necessary, the consultant and the

Market Managers would call on the assistance of Security to ensure that the licence conditions relating to noise are complied with.

- 5.12 A plan of the market areas indicating the position and orientation of the sound systems located on market stalls will be produced and made available to MDC as part of the schedule of ongoing requirements (Appendix 5).
- 5.13 A full log of all actions taken and advice etc. given in respect of the market areas will be kept, and this would be available for inspection by MDC at any time, including the daily briefing meetings.
- 5.14 A flow chart of illustrating the control mechanisms for the control of noise from stages and market areas is included as Appendix 3.

6. OTHER AREAS: NON MARKETS

- 6.1 The Other Areas operate after the stages have closed, and include The Glade Café, The Avalon Café and Lost Vagueness as well as the Theatre and Circus areas of the Greenfield's for example.
- 6.2 The location of Lost Vagueness, on the perimeter of the festival site adjacent to the Cockmill area is considered to be the preferred position for this popular attraction. During the daytime and up until the stages close the operation of Lost Vagueness does not result in noise levels that exceed the licence conditions. In 2004 night time noise levels were however found to cause breaches to the licence conditions in the Cockmill Lane properties, although this resulted in only two complaints (one received before and one after the licence period).
- 6.3 The assessment in Appendix 6 of this strategy acknowledges that despite the controls that can be applied, a reduced but significant risk remains.
- 6.4 The licensee has contacted all of the residents in the Cockmill area and has informed them of the importance of Lost Vagueness in this position to the festival and that they are likely to experience similar levels of night-time noise in 2005 to those experienced in 2004.
- 6.5 The local residents have made it clear to the licensee that they acknowledge that there is a likelihood that they will be exposed to music noise on the nights licensed for entertainment. They have also told Mr Benn, that they accept this situation and that they will not complain either to the festival or MDC regarding noise during the licensed period.
- 6.6 The operation of the other environment areas will not breach the night time noise conditions.

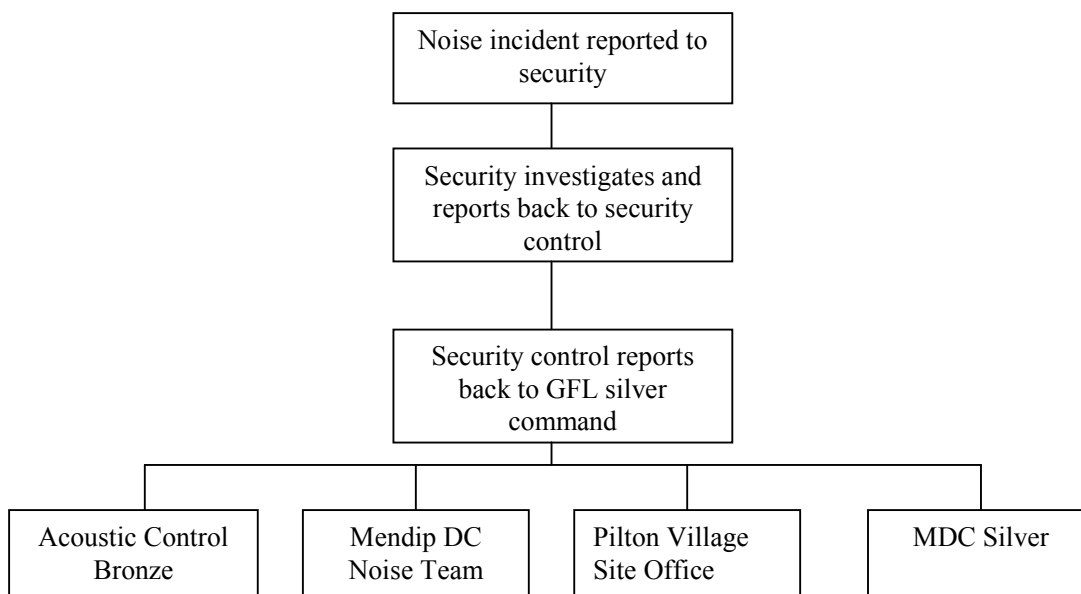
7. OTHER ON-SITE SOUND SYSTEMS

- 7.1 MDC have made GFL aware that there will be other sound systems on site that are not identified as either stages or as part of the market areas. Examples of these locations from previous years have included the marquee on the Greenpeace field, the Outside Theatre stage and the Circus Big Top, sound systems in the Field of Avalon, backstage hospitality and in hospitality in Jazz Camping.
- 7.2 To achieve an effective level of sound management, the consultant will contact all of the Area Co-ordinators to provide details of these sound systems in a similar format to that used to obtain details of the sound systems to be installed, contact details and proposed hours of operation together with details of the use to which these sound systems will be put, for example music or speech.

Draft

8. CAR PARKS AND CAMPING AREAS

- 8.1 It is the expressed goal of GFL that unlicensed music that would generate noise at a level high enough to cause a breach of licence conditions off site, such as parties etc. will not be allowed to arise. This is recognised fundamentally as a Security issue, and as such the acoustic consultants would not be visiting the campsites and car parks to effect noise control.
- 8.2 At festivals prior to 2004, it was of concern that noise arising from these areas has not been dealt with as swiftly as all parties would have desired. This was not considered to be such an issue in 2004 when the following measures were instigated. In view of this, a flow chart is included below to show how such incidents are to be dealt with, and who is responsible at the various stages;
- 8.3 The consultants will however be available to make off-site visits during the night-time period to ensure that the licence conditions relating to noise are not being breached. During these investigations, every attempt would be made to identify the source of any noise source in relation to the site.
- 8.4 All persons in the campsites will be advised by Security that the playing of music at such levels so as to be 'audible and discernible' offsite is not permitted. Vehicles entering the site would be searched by Security, and any sound equipment that was identified as having the potential to be used for unlicensed public entertainment would be confiscated. Security teams will be patrolling the campsites to ensure that this requirement is strictly observed.
- 8.5 In the event that a potential breach of the licence conditions is identified, the security team will use all reasonable endeavours to halt these activities, unless there is advice from the police that such actions would lead to breaches of public order and safety. Any such incident will be kept under continual review for the duration of the festival or until the matter is resolved.
- 8.6 The potential for these incidents to occur will be more likely during the night-time period. If such an incident does occur, it would be subject to a review at the following morning's liaison meeting.
- 8.7 When an unlicensed musical event is brought to the attention of GFL, the exact position of the sound system etc. would be notified to Security. It is appreciated that it is not often possible to effect an instant reduction in noise levels for reasons of public safety, but is also recognised that these occurrences are also a potential threat to other festival goers. A report on the progress that is being made to stop the music should be available to MDC from GFL after 90 minutes during the daytime and 30 minutes during the night-time. The lines of reporting are as follows



9. FIREWORKS AND OTHER PYROTECHNICS

- 9.1 There were fewer complaints of noise from fireworks in 2004, and from the timing of the complaints these were most likely to have originated as a result of a short (less than 5 minutes) display as part of the headline act's show on the Pyramid Stage on Saturday night.
- 9.2 Fireworks and other pyrotechnics are recognised as being a part of the entertainment provided at the festival and are often a fundamental part of a particular performance. It is also recognised that noise often forms a crucial part of a display. The purpose of this part of the strategy is to seek to reduce any annoyance experienced both on site and off site as a result of fireworks and other pyrotechnics.
- 9.3 There is currently no published guidance in the UK detailing what constitute satisfactory noise levels from fireworks or pyrotechnics. In the absence of any such guidance, this strategy will address the main areas of concern that are found to arise from displays.

Unauthorised Displays

- 9.4 GFL is committed to preventing the occurrence of the use of any fireworks that are not being provided as part of the licensed entertainment. This is directed primarily at persons attending the

festival who may consider bringing fireworks to the event intending to set them off. This is recognised as not only disturbing but also potentially very dangerous if this is done in campgrounds or other areas of public resort. As such all persons attending the event will be discouraged from bringing fireworks to the site and that if anybody is found with any fireworks, these will be taken from them by Security.

- 9.5 Festival goers are warned on the website that fireworks that are brought to the event will be confiscated.

Pyrotechnics on the music stages

- 9.6 Some acts use 'pyros' as part of their stage presentations. These are generally short lived and always notified to the stage managers as part of the band's requirements as well as for health and safety purposes. They are invariably used later on in the day's entertainment, by the bigger acts on the bill. As such it would not be possible to restrict them to an earlier time. With the stages closing at 12.30 am, this would be the latest when these are used. The likely sites are the Pyramid and Other stages and possibly the Jazz World stage.

- 9.7 As part of the general noise information that is provided by stage managers regarding other sound management issues, information on what acts are to use fireworks will be sought and passed to MDC. Where a noise related issue is highlighted, this would be discussed between the consultant, the stage manager, the event health and safety co-ordinator and the act's production representatives as required.

Draft

Fireworks on other stages

- 9.8 At the 2002 festival, complaints regarding fireworks that were received by MDC appeared to be associated with displays at the Circus and Theatre fields. These displays occurred after the music stages had closed and after theatrical entertainment at this stage. The initial programme scheduled the audible displays between 01.10 and 02.20. It is proposed and agreed with the stage manager that for this year's event, the audible displays would finish by 01.30. It was the case that the use of maroons to announce the start of a display were not used in 2003. This will also apply to the 2004 festival.
- 9.9 To evaluate the likelihood of a firework display causing annoyance, the following information, where it is readily available for each display is to be provided to the consultant, the minimum information to be supplied is marked with an asterisk;

- Details of Organiser*, Operator* and supplier
- Location*
- commencement time and duration*
- types of fireworks e.g. mini rocket, air bomb etc
- Shell size, diameter etc
- proposed firing order
- Most noise sensitive properties
- Any actions taken to monitor or minimise any noise effects*
- Anything else of assistance

9.10 Actions taken to minimise any noise effects can include providing details of the times of displays to persons in the neighbourhood who have complained to MDC of being disturbed by noise from fireworks during previous festivals. In the interests of confidentiality, it is recognised that this task should be undertaken by officers of MDC.

9.11 Every effort will be made to limit any annoyance caused by the fire shows, whilst at the same time ensuring that this important attraction continues as part of the festival.

9.12 A schedule of fire shows will be passed to MDC to assist in dealing with this matter.

10. NOISE AT WORK

10.1 Overall responsibility for on site Health and Safety Issues on behalf of GFL lies with the Health and Safety Coordinator. They will be responsible for ensuring that the festival area co-ordinators provide the required on-site health and safety risk assessments at the stages, which include noise at work. The reference legislation is recognised as being 'The Noise at Work Regulations 1989' and the three action levels defined within these Regulations will be used to define areas that are to be designated 'Noise Control Areas'. These areas are primarily the stage areas, the pits and the front of house mix positions. A further control level of $L_{Aeq, 1 \text{ minute}} 110 \text{ dB}$ is also included in Licence Condition C4.

10.2 Risk assessments relating to the exposure to noise at work in these areas are to be provided by all companies working in these areas, and these are to be submitted to GFL at least 21 days before the first day of the festival. This information will be available for inspection by MDC at any time.

10.3 The risk assessment must also include a specific reference to the use of barriers to prevent the audience being closer to any sound system than is permitted under the licence conditions.

10.4 As stated in 3.2 above, the consultant is available to check the noise exposure of persons at work and others in the noise control areas, including the suitability of any hearing conservation strategies that have been put in place. Symonds will make checks of the prevailing sound levels in these areas by taking spot readings as required throughout the festival. If required, these would be supplemented by personal exposure measurements of individual workers.

Draft

APPENDIX 1

NOISE CONDITIONS PUBLIC ENTERTAINMENT LICENCE 2005

To Be Added

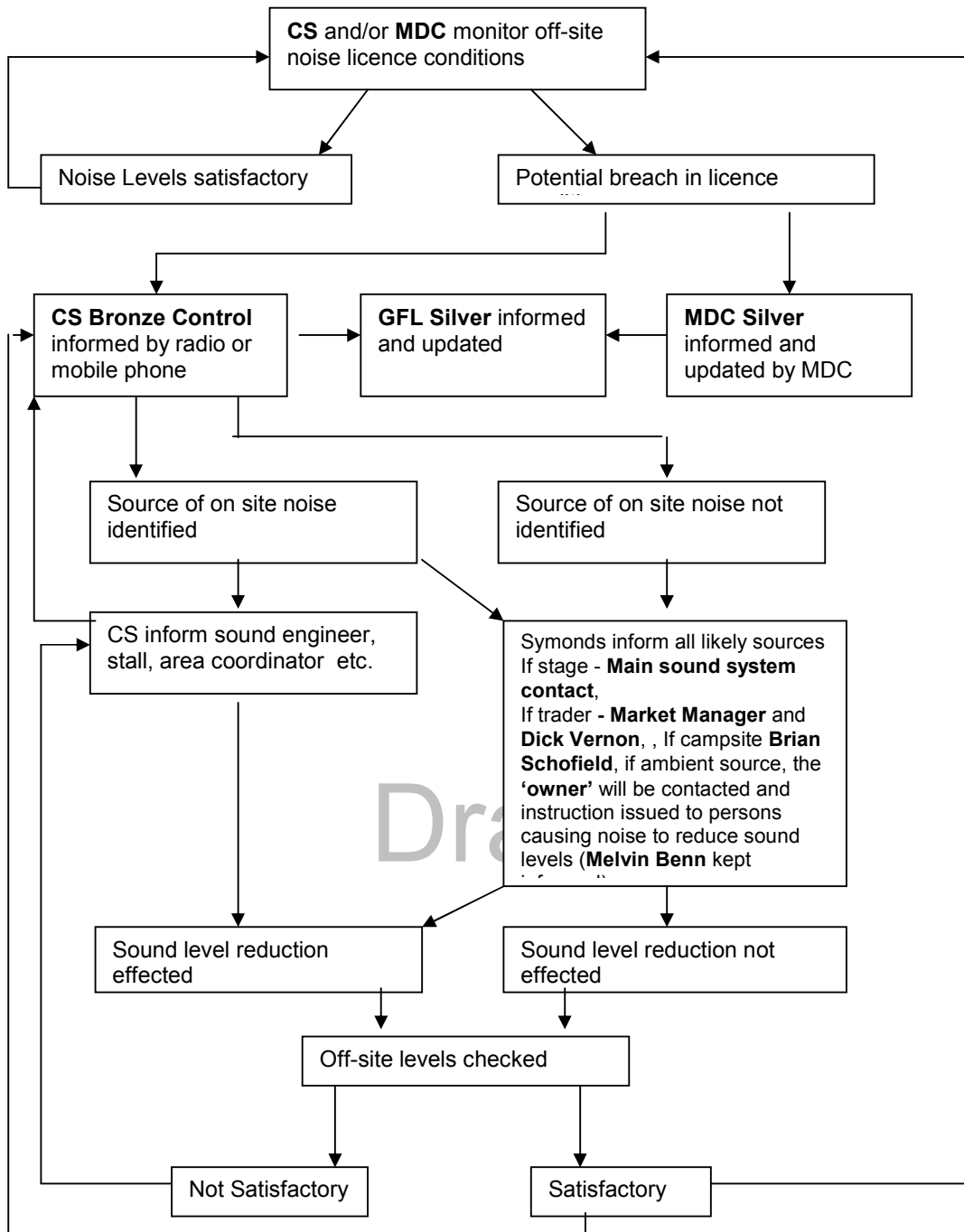
APPENDIX 2

SCHEDULE OF MARKET TRADERS WITH ALLOCATED SOUND SYSTEMS

To Be Provided

Draft

APPENDIX 3 : SOUND CONTROL FLOW CHART



APPENDIX 4 : STAGES SOUND SYSTEM SCHEDULE

To Be Provided

Draft

APPENDIX 5 – SCHEDULE ONGOING REQUIREMENTS

1. List and contact details of consultants personnel
2. Chart showing areas and periods of cover
3. Sound System Schedule
4. Firework Schedule
5. Market Stall Schedule
6. Other Areas

APPENDIX 6 RISK ASSESSMENT

Sound Source	Potential	Likelihood	Score	Action	Residual Potential	Residual Likelihood	Residual Score
Stages							
Pyramid	3	2	6	Focussed sound system Permanent sound monitoring at FOH, frequent offsite checks, Real time audio and remote data download of meter.	2	1	2
Other Stage	3	1	3	Regular checking of permanent sound monitoring at FOH	2	1	2
Dance	2	2	4	Regular checking of permanent sound monitoring at FOH, frequent offsite checks	2	1	2
Green Room	2	2	4	Size of sound system and all music after 00:30 to be agreed with MB.	1	1	1
Campsite	3	3	6	Equipment checks and frequent security patrols	1	1	1
New Bands	3	2	6	Regular checking of permanent sound monitoring at FOH, frequent offsite checks	2	1	2
Left Field	3	1	3	Checks at FOH through festival. Programme to finish at 00:30 Ambient thereafter frequent offsite checks.	1	1	1
Acoustic	2	1	2	Checks at FOH through festival	1	1	1
Acoustic Backstage	2	2	4	Size of sound system and all music after 00:30 to be agreed with MB	1	1	1
Jazz World	2	1	2	Checks at FOH through festival	1	1	1
Jazz World Backstage	2	2	4	Size of sound system and all music after 00:30 to be agreed with MB.	1	1	1

Avalon	3	2	6	Number and size of sound systems to be restricted and agreed with MB. Bar Solar and backstage system to be removed. Avalon trader systems will be revised. Checks at FOH through festival	1	1	1
Cinema	2	3	6	Propagation tests after 00.30	2	1	2
Circus	1	1	1	Checks at FOH through festival	1	1	1
Theatre	1	1	1	Checks at FOH through festival	1	1	1
Circus and Theatre Fields							
Cabaret Marquee East Holts	1	1	1	Checks at FOH through festival	1	1	1
Circus Big Top East Holts	1	1	1	Checks at FOH through festival	1	1	1
Performers Corner East Holts	2	1	2	Checks at FOH through festival	1	1	1
Other East Holts	1	1	1	Checks at FOH through festival	1	1	1
Theatre Marquee Glebeland	1	1	1	Checks at FOH through festival	1	1	1
Dance Variety and Fire Stage Glebelands	2	2	4	Firework schedule produced, Checks at FOH through festival	2	1	2
Outside Circus Stage	1	1	1	Checks at FOH through festival	1	1	1

Sound Source	Potential	Likelihood	Score	Action	Residual Potential	Residual Likelihood	Residual Score
Ariel Enterprises	1	1	1	Checks at FOH through festival	1	1	1
Mimbre	1	1	1	Checks at FOH through festival	1	1	1
Miniscule of Sound	1	1	1	Checks at FOH through festival	1	1	1
Smallest Night club in the world	1	1	1	Checks at FOH through festival	1	1	1
Workers Beer Bar Plumleys Paddock	1	1	1	Checks at FOH through festival	1	1	1
Green Room Plumleys Paddock	2	2	4	Size of sound system and all music after 00:30 to be agreed with MB	1	1	1
Avalon							
Café Avalon	1	1	1	Checks at FOH through festival	1	1	1
Swing Boats	2	3	6	No sound system to be permitted	1	1	1
Tipi	1	1	1	Very low risk No action proposed	1	1	1
Glade							
Glade Stage	2	3	6	Music to finish at 00:30.	1	1	1
Glade Café	1	1	1	Checks at FOH through festival	1	1	1

Lost Field							
Lost Cafe	1	1	1	Checks at FOH through festival	1	1	1
Greenpeace							
For One Giant Leap	1	1	1	Checks at FOH through festival	1	1	1
Café Tango Lounge	1	1	1	Checks at FOH through festival	1	1	1
Green Fields							
Croissant Neuf	2	1	2	Checks at FOH through festival	1	1	1
Elemental	1	1	1	Checks at FOH through festival	1	1	1
Small World	1	1	1	Checks at FOH through festival	1	1	1
Tadpole	1	1	1	Checks at FOH through festival	1	1	1
Groovy Movie Films	1	1	1	Checks at FOH through festival	1	1	1
ID Spiral	1	1	1	Checks at FOH through festival	1	1	1
Poetry and Words	1	1	1	Checks at FOH through festival	1	1	1
Lost Vagueness	2	3	6	Programming of acts to be checked, size and orientation of sound systems to be agreed Checks at FOH through festival. Lost Vagueness cannot operate in this location without exceeding the night time noise license conditions (see Section 6).	2	2	4
Mandala	1	1	1	Very low risk No action proposed	1	1	1
Café	1	1	1	Very low risk No action proposed	1	1	1
Casino	1	1	1	Very low risk No action proposed	1	1	1

Draft

Market Areas							
Radio 1	3	2	6	Reduced hours of operation to 00:30, smaller sound system, Frequent checks through festival	1	1	0
Workers Beer (The Crown)	2	2	4	Sound to be allowed only if strictly controlled by management. Checks through festival Ambient only after 0030	1	1	1
Brother s Drinks	2	1	2	Checks through festival Ambient only after 0030	1	1	1
Café	2	1	2	Checks through festival	1	1	1
Joe Bananas	1	1	1	Checks through festival	1	1	1
Workers Beer (Café Oran)	2	1	2	Sound to be allowed only if strictly controlled by management. Checks through festival	1	1	1
Workers Beer (Bread & Roses)	2	2	4	Sound to be allowed only if strictly controlled by management. Checks through festival	1	1	1

Late Night Lounge	2	1	2	Checks through festival	1	1	1
Elferds Mexican Cantina	2	1	2	Checks through festival	1	1	1
Steves Wine Bar (x3)	2	1	2	Checks through festival	1	1	1
Maximum Funky Intentions	2	1	2	Checks through festival	1	1	1
Spunky.co.uk	1	1	1	Checks through festival	1	1	1
Banyan Tree	1	1	1	Checks at FOH through festival	1	1	1
Miscellaneous							
Mutoid Waste	1	3	3	Operations restricted to main stage hours only, no parades or operations after main stage curfews.	1	1	1

Draft

FIGURE – LOCATION OF SOUND SYSTEMS GREATER THAN 500 W IN THE MARKET AREAS

To be provided

Draft